



Puerto Rico Interprofessional Education, Service Learning, Community Based, Participatory Research Fellowship

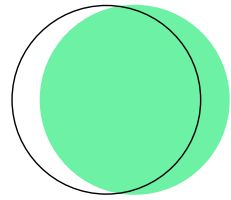
Apply Now!

An illustration of two stylized figures. The figure on the left is wearing a blue long-sleeved shirt with white 'X' patterns and a black skirt. The figure on the right is wearing a blue long-sleeved shirt with large blue polka dots and a black skirt. Both figures have black hair and are wearing bright green gloves and shoes. They are both raising their right hands in a gesture of welcome or celebration. The background is white with a large green circle at the top and a blue circle at the bottom right.

welcome!

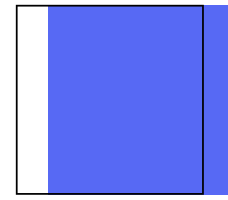
- Puerto Rico (PR) was devastated during the 2017 hurricane season, resulting in major threats to the public's health
- In Fall 2017, staff, students, and faculty at Columbia University sought to address the impact of severe weather events in PR with long-term support.
- A working group, in collaboration with local Puerto Rican organizations, developed a community-based participatory research (CBPR) and service-learning project with an emphasis on inter-professional collaboration.

About the Fellowship



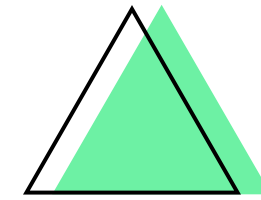
MISSION

- Our mission is to develop collaborative partnerships and programs that support our partners in Puerto Rico in the wake of natural disasters, such as Hurricanes Maria and Irma, and to foster University and students involvement in: Inter-professional Educational (IPE); Community-Based Participatory Research (CBPR); Service Learning (SL) approach to community-engaged work.



GOALS

- Learn about and consider the historical and socioeconomic contexts of Puerto Rico
- Develop partnerships for Sustainability and Reciprocity
- Promote equitable community involvement



COMMUNITY ENGAGEMENT

- Developing a sense of community within our Fellowship participants
- Bringing in local partners and community members to contribute to the work and explicitly express the needs of their community

Who are we?



Students



Partners in Puerto Rico



Columbia Leadership

Our Fellows are passionate students who are actively working to dismantle public health barriers and enact positive and necessary change. To find video testimonials from our Fellows directly sharing their experiences, please visit our webpage.

Currently we have partners in San Juan, Puerto Rico including, but not limited to:

- Proyecto Enlace Del Caño Martin Peña
- Universidad del Sagrado Corazón
- University of Puerto Rico
- Impactivo Consulting
- Dr. Carmen D. Sánchez Salgado, Puerto Rico Ombudswoman of Aging

Our leadership team is made up of Columbia University Faculty and Staff who are committed to the further development and sustainability of the Fellowship. This group includes:

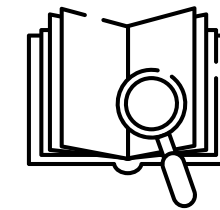
- Region 2 Public Health Training Center
- Lerner Center for Public Health Promotion
- Executive Working Group: members can be found on our website

What does it mean to be a Fellow?

In general, the goal of the Fellowship is for students to experience growth in these key areas:

-

PR Cultural Context



-

Interprofessional Collaboration



-

Sustainability and Reciprocity



-

Equitable Community Engagement



Fellowship Components: Service-Learning



Student understanding of three components of Service-Learning (SL):
preparation, action, and reflection

- Learning SL pedagogy focused on equity and the need for cultural humility and ongoing reflection
- Engaging with community in an equitable fashion while in PR or remotely by developing community educational materials such as infographics during COVID-19

Fellowship Components: Interprofessional Education

Student engagement with Interprofessional Education (IPE) competencies:

- Teams/Teamwork
- Roles/Responsibilities
- Values/Ethics
- Communication



Fellowship Components: Community Based Participatory Research

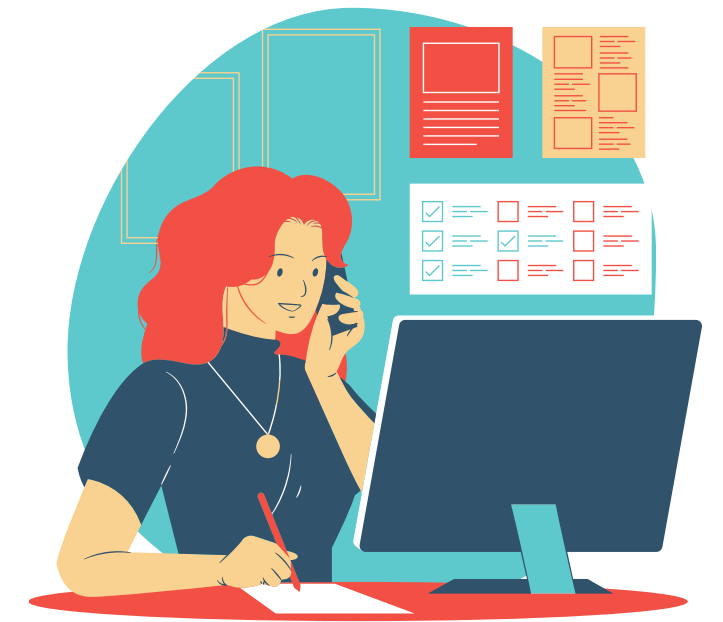
Student exposure to Community Based Participatory research:

- Students gain real-life exposure to research design, development, methodology, Internal Review Board approval, cultural humility in engaging with community partners, data collection, and analysis—all focused on equitable community engagement that supports social change

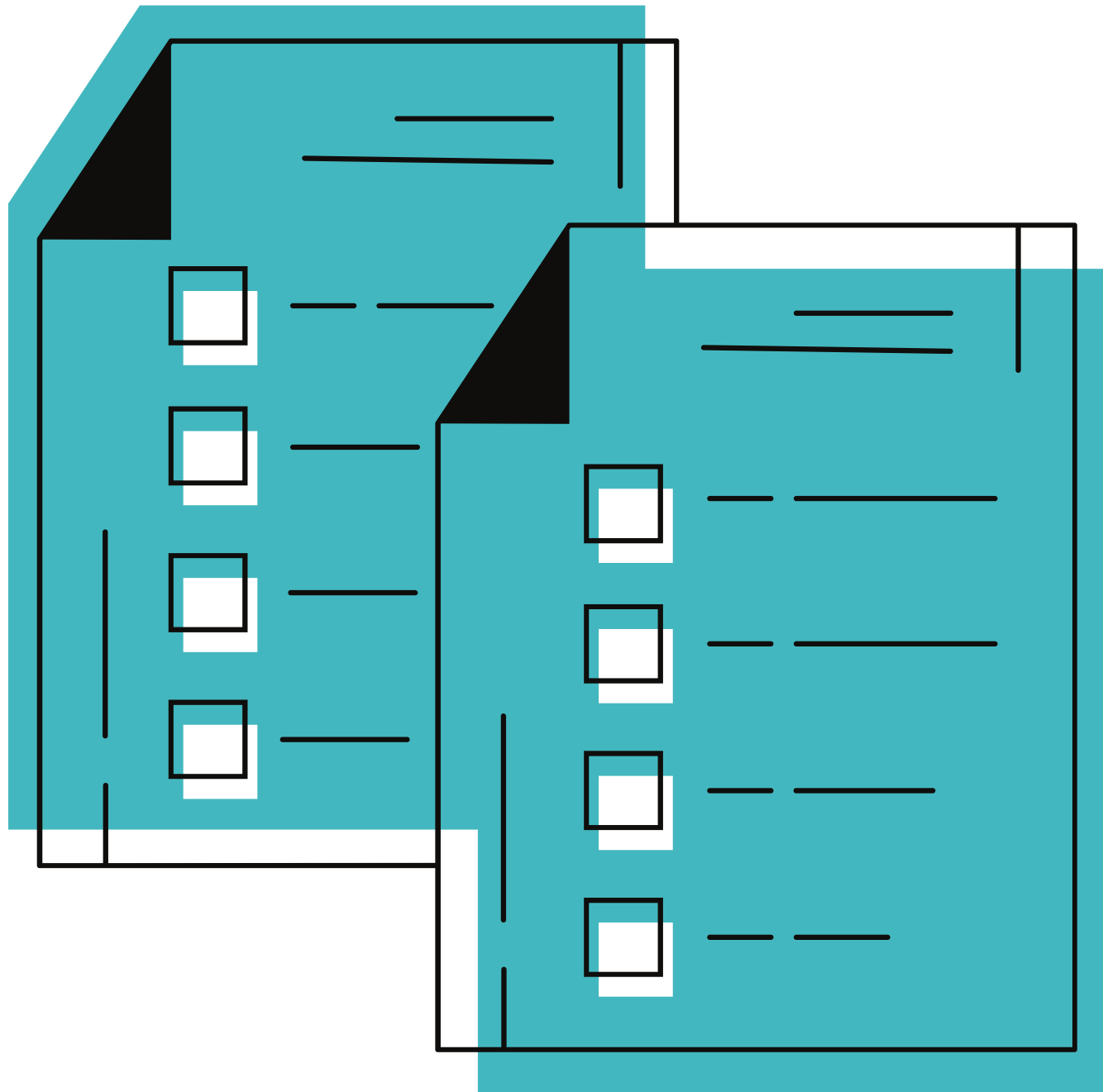


Curriculum

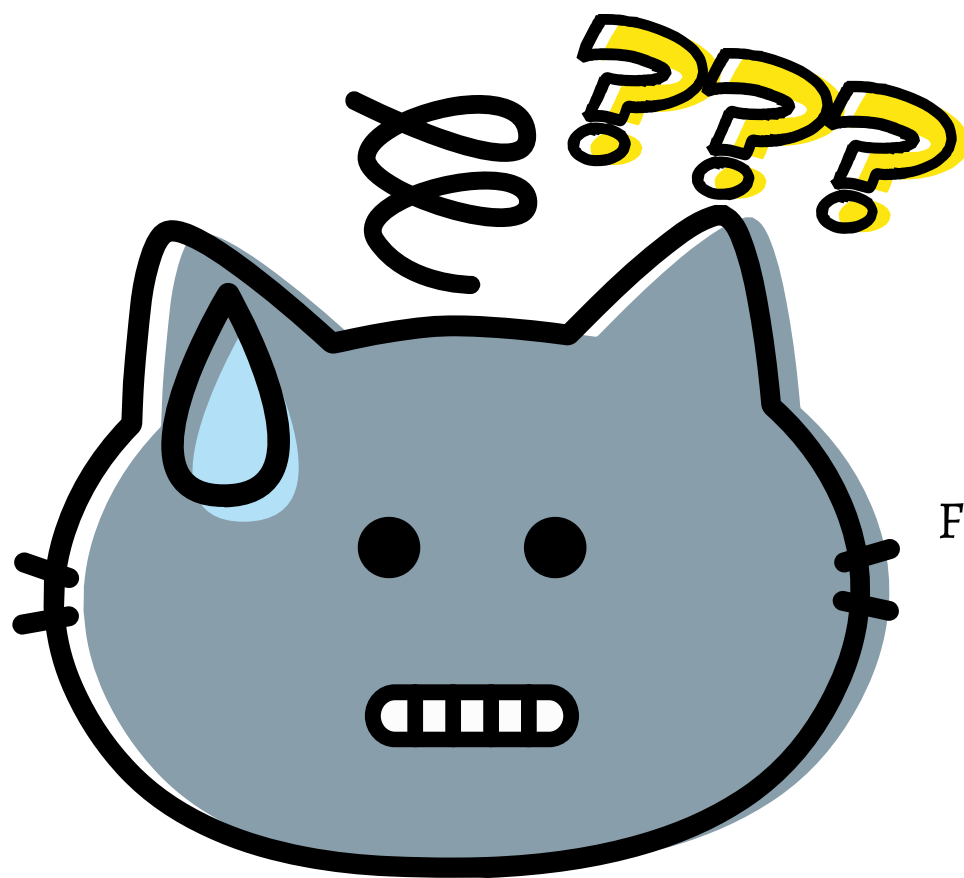
Format	Outcome
Weekly or Bi-weekly Meetings	Group bonding and team building; exposure to important social and historical information about Puerto Rico; co-learning through team presentations.
Committee Work	Small group engagement around a variety of real-life efforts that allow the Fellowship team to make important contributions to our PR partners or the Fellowship infrastructure (developing research or interventions, organizing Service-Learning activities, grant writing, creating innovative international educational models, planning PR trip logistical details, supporting and promoting the Fellowship through communications and social media efforts).
On-Site Service Learning or CBPR Experience	Students travel to Puerto Rico during Spring Break and participate in planned Service-Learning activities and/or Community Based Participatory Research efforts often with students from Universities in Puerto Rico.
Data Analysis and Reporting	At the end of the semester, students share the outcomes of their work with community partners, Columbia University leadership and students, and develop a report that documents cohort activities.
Practicum Opportunities	For interested students, opportunities for Summer Practica in Puerto Rico further support Fellowship activities through direct community engagement



Application Information



For more information on how to apply,
please email
msph-ofp@cumc.columbia.edu



Frequently Asked Questions

Is the Fellowship paid/does it include a stipend?

Fellowship funding varies from year to year. Please check the website or email Field Practice at msph-ofp@cumc.columbia.edu for the latest information.

What is Service-Learning?

Service-learning is an educational approach that combines learning objectives with community service in order to provide a pragmatic, progressive learning experience while meeting societal needs.

What is CBPR?

CBPR is an equitable collaboration with community partners to conduct research. It recognizes the unique strengths of the academic-community partnership. CBPR begins with a community determining a research project of importance to them with the aim of combining knowledge and action for social change to improve community health and eliminate health disparities.

How long is the Fellowship?

The Fellowship is a six-month-long project, with the opportunity to travel to Puerto Rico for one week of in-person data collection and participation. Upon returning, students will analyze and disseminate the data that was collected and report and reflect on the entire six-month experience.

Thank you!

Get Social With Us

Follow us on our social media platforms to stay updated on current projects and application due dates!



INSTAGRAM

See us featured on the Mailman
instagram page

